



## Power BI Map Visualizations

Advanced map visualization tools for some of the most complex infrastructure providers. Our Power BI custom map solution gives analysts an easy tool-set with domain specific visualizations to make data speak in the context of our customer's line-based physical infrastructure.



# Advanced Maps Visuals

## BRIEF OVERVIEW

Using its flexible customization options, Abylon MAP can be used to visualize business critical data for various business cases within a number of sectors, including transportation, energy, utility, telco or any industry that uses complex, line-based infrastructures.



Custom railway map of Italy in Power BI

## BENEFITS OF ABYLON MAP

01

DOMAIN SPECIFIC VISUALIZATIONS AND DATA MODELS

02

ACTIVE MAPS BASED ON POWER BI MODELS OR GEOJSON URL

03

DISCOVER HIDDEN PATTERNS AND WHAT IF ANALYTICS

04

GIVE DATA MEANINGFULL CONTEXT FOR EFFECTIVE ANALYTICS

Get More Out of Power BI

## ADVANCED, CUSTOM POWER BI MAPS

---

Our highly customizable solution extends the limited functionality of Microsoft Power BI's own native map visualization solution, with domain specific functionality, option for self-service analytics, flexible rule sets, modular infrastructure and many-many more.

*If you need point-to-point routing, line logic selections, or advanced map visualization like detailed routes and objects, or navigation between areas and complex area hierarchies you need Abylon MAP!*

If you are already using Power BI data warehouses you can easily integrate our map visualization solution for your existing or future tabular models.

### MAIN FEATURES

---

#### IDEAL FOR LINE-BASED NETWORKS

Visualization of linebased infrastructure using coordinates in the data model or external GeoJson layer descriptions.



#### VISUALIZATION OF LOCATIONS

Visualization of locations (e.g.: railways stations) on top of the line-based infrastructure



#### SELECTION ENGINE AND CROSS FILTERING

Selection engine for interactivity and cross filtering inside a Power BI report (selecting multiple parts of different lines, stations)



#### USE COLORS AND WIDTH FOR BETTER CONTEXT

Flexible rules for colors / widths – from easy-to-use automatic rules to fully customizable DAX based calculations



# What's Under the Hood

## DETAILED FEATURES

### ➤ USE CIRCLES AND LINES FOR OBJECT TYPES

Use circles and lines simultaneously. Select circles or lines, drill-down from areas, divide lines by direction, use geojson files for lines, points, areas and much-much more.

### ➤ MULTIPLE POINT AND ROUTE SELECTION, MULTIPLE LAYERS

Select multiple routes at the same time or search for and zoom geographical locations all inside Abylon MAP. Use multiple layers simultaneously, for example: Layer 1-2 – regions with two aggregated KPI's, Layer 3 – line or circle based map.

### ➤ EASY-TO-USE PARAMETERS FOR DIFFERENT COLORS AND WIDTHS

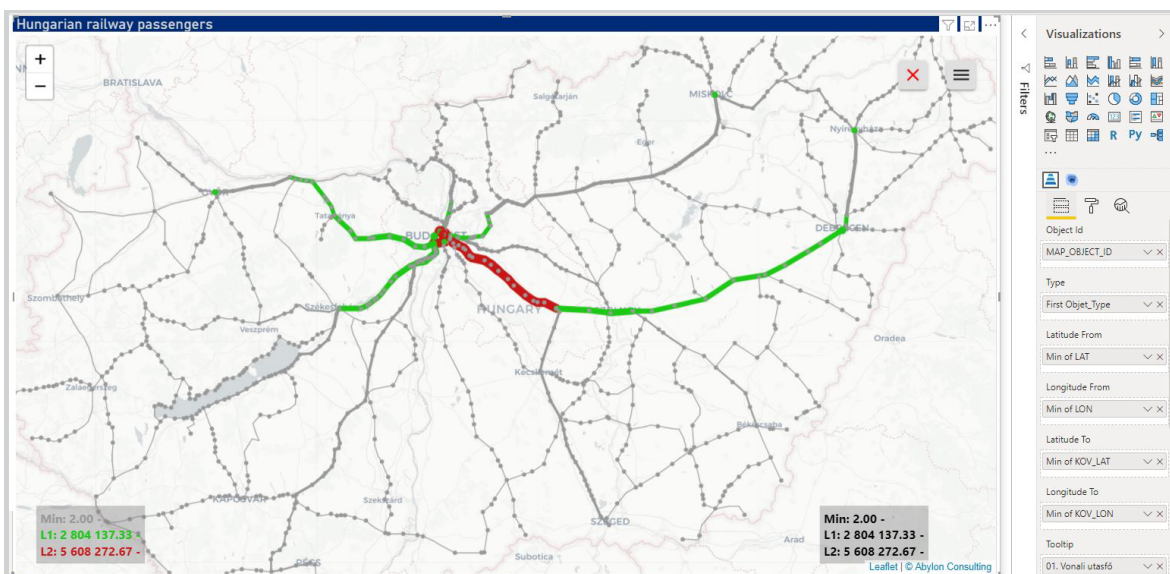
Coloring, line-weighting and circle sizing by measures, all at same time. Multiple types of calculation methods of weight and colors: linear calculation, manual or color scale.

### ➤ COMPLETE CROSS FILTERING INSIDE POWER BI

Power BI filters the visualization inside Abylon Map layers. Search for and zoom geographical locations.

### ➤ NO DEVELOPER SKILLSET REQUIRED

Abylon MAP is an efficient tool for self-service analytics. No developer skill set is required. This, combined with the rapid implementation, allows for a super quick go-live.

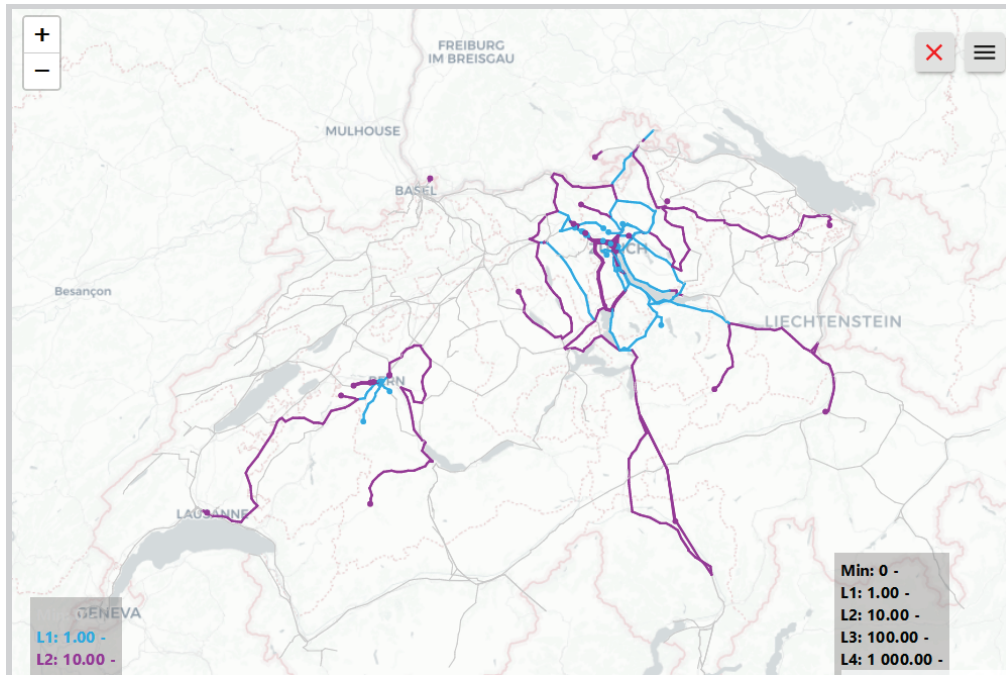


Custom railway map of Hungary in Power BI

# For Line-based Infrastructures

## IDEAL USE CASES FOR ABYLON MAP

Abylon MAP is must-have in any business dealing with fixed, line-based infrastructures. This includes the Transportation industry (Railways, Public transportation, Airlines, Shipping), the Energy industry and Utilities providers (Pipes networks, Electricity networks), Telecommunication providers (Internet and Telecommunications networks).



Custom railway map of Switzerland in Power BI

## About Us

# ABYLON CONSULTING

Abylon is a dynamically growing IT consultancy from Central Europe that constantly makes the lists of the fastest growing companies in the region. We offer consulting services and innovative rapid IT solutions for business intelligence, data analytics and collaboration.

We develop planning and analytics solutions, data warehouse automation and BI tools, workflow management and collaboration platforms based on Microsoft technology.



+44 2045405081



info@abylon.io



100 Bishopsgate,  
London, EC2N 4AC, UK

[www.abylon.io](http://www.abylon.io)